



# SIMPLY REVOLUTIONARY.

SETTING STANDARDS: THE BM/65 SERIES LARGE PLANERS.



# MILLIONS OF KILOMETRES BEAR OUR SIGNATURE.

You build the finest roads so we can all make the quickest progress. And to ensure your rapid progress, we build the best machines. Part of the global leading FAYAT Group, BOMAG supplies equipment for all road construction applications: from soil compactors to cold planers and recyclers, from asphalt rollers to pavers. For over 60 years, the history of our company has been synonymous with the history of road construction.

Our cold planers are based on the successful BOMAG design philosophy: high-quality materials for maximum reliability, powerful yet economical drive systems for greater efficiency, and inno-

vative ideas with real practical benefits. The unique ION DUST SHIELD, which protects against fine dust, is a good example of this philosophy.

We owe our innovative strength to our more than 2,300 employees worldwide, their commitment, and their experience. Our specialists working around the world and our partners in more than 120 countries are on hand to help you solve the most demanding challenges: from equipping the machine to its daily operation. Success comes from teamwork!





**WIDE RANGE.  
FOR EVERY WORKING WIDTH.**



**BM 1000/35-2  
BM 1200/35-2  
BM 1300/35-2**

**BM 1000/30  
BM 1200/30  
BM 1300/30**

**BM 1000/20**

**BM 500/15-2  
BM 600/15-2**

BOMAG offers a wide range of powerful and efficient cold planers. From the compact machine with a working width of 500 mm to the 780 HP large planer with a working width of 2,500 mm.

The BM/65 series marks the launch of a new generation of cold milling machines – even lighter, more efficient and easier to operate. The machines' comprehensive redesign brings many advantages – for the operators and for work efficiency.

With a CECE weight of 27 tons, the BM 2000/65 is lighter than all other planers in the 2-metre class, which enables particularly efficient and flexible transport processes. The smallest milling radius, coupled with a large slewing angle, makes this machine the perfect all-rounder.

Also typical for BOMAG is the idea of sustainably minimising fine dust pollution for the operator! In other words, nothing is left to chance.



**BM 2000/60-3**

**BM 1500/65  
BM 2000/65  
BM 2200/65**

**BM 2000/75  
BM 2200/75  
BM 2500/75**

# HIGH TECH MEETS EASE OF OPERATION.

## FATIGUE-FREE WORKING.

- Fully vibration-insulated operator station
- Infinitely variable driver's stand, adjustable by up to 200 mm
- Optimal view of right cutting edge and side plate
- Heated comfort seat

## BOMAG ION DUST SHIELD.

- Reduces harmful fine dust by at least 80%
- Highest available level of protection for drivers and the environment
- Future-proof for fine dust regulations in urban areas
- Smart technology requires no filters



## OPERATOR-FRIENDLY MAINTENANCE.

- Easily accessible service points all around
- AdBlue and diesel filling and filter change from the driver's stand
- Large service flaps on the right and left for quick access to auxiliary drive and milling gear
- Engine service points accessible from above and below

## OUTSTANDING CUTTING TECHNOLOGY.

- Exchange holder system optimised for consumption and wear
- Lower fuel consumption and longer service life as a result
- Maintenance intervals reduced by up to 20%



### MAXIMUM PRACTICALITY.

- Conveyor belt with 130° slewing angle
- Smallest milling radius in the 650 HP class
- Easy lorry loading
- Adjustable belt speed for full loading of trough

### INTUITIVE OPERATION.

- Standardised operating concept for quick familiarisation
- Two informative 7" full-colour displays
- Clear presentation of work-related data
- Easy selection of assistance systems via BOMAG Fast Select

### COST-EFFECTIVE POWER.

- 640 HP
- Stage V and Tier4f dual certification
- Perfect ratio of engine output to milling speed
- Most productive and economical planer in its class



### FAST MANOEUVRING.

- Different drive sizes, individually selectable
- Firm stand
- Greater mobility between construction site and low loader

## THE OPERATING CONCEPT:

# BECAUSE SIMPLE IS SIMPLY BETTER.

*The easier a machine is to operate, the higher its productivity on the job. That's why our engineers intensively studied the work processes from the operator's point of view and subsequently developed an intuitive operating concept. As a result, experienced machine operators can master the handling of the BM/65 series in no time at all - and new employees are trained as quickly as possible.*

The various functions are arranged in familiar positions both on the main operating panel on the driver's stand and the ground control console. Exactly where the operator expects to find them. The main operating panel can also be swivelled for ergonomic adjustment.

When milling, the driver is aided by the two easy-to-read 7"-full-colour displays on the operator's stand. Work with the BM/65 series is additionally simplified by the BOMAG Fast Select bar, BOMAG Easy Cut and the integrated BOMAG Easy Level levelling system.



Top equipment for the second operator: operating console and additional display on the ground control panel.

Developed for a clearer overview and intuitive work processes: the driver's stand with swivelling main operating console.





BOMAG Easy Level: the integrated sensors for side plates, cross slope, front sensor or multiplex are easy to select. This results in an intuitive and stress-free workday.

#### **BOMAG FAST SELECT.**

Allows the operator to change the current machine display screen quickly and easily, e.g. to access the memory menu, machine data or levelling display.

#### **BOMAG EASY LEVEL.**

Provides the operator with an effective and easy-to-use automatic levelling system that displays all the necessary information during milling. If necessary, the operator can quickly and easily adjust the milling depth or cross slope. The visual design of the information also takes the strain off the operator: default and actual values are shown in large and easy-to-read numbers; functions are represented by intuitive symbols. They can be activated directly via the side-mounted buttons. In combination with

BOMAG Fast Select, all milling settings can therefore be entered in a maximum of 3 steps.

#### **BOMAG EASY CUT.**

After activating the automatic system, the machine lowers. Once the correct depth is reached, milling commences, and the rear track chains start to move into the cut. BOMAG Easy Cut then takes over control of the rear lifting columns, thus ensuring an even cut. The machine operator can now focus 100% on maintaining the milling parameters, lane and loading.

## THE LIGHTWEIGHT CONCEPT:

# SLIMLINE WITH WIDE VISION.

*Even a large, powerful machine can feel incredibly easy to manoeuvre when it has been designed just for this purpose. The BM/65's extremely slim profile offers unprecedented all-round visibility.*

The operator has a clear view of the front track chains, even under the loading conveyor. Cut-outs on the driver's stand provide an optimal view of the side plates and the front hold-down. Highly visible cutting edge indicators also facilitate precise steering along the milled edge. The special shape of the rear enables the operator to perfectly assess the area behind the machine as well. The camera system covers the last blind spot here and ensures maximum overall safety.



The slim design optimises the operator's overview, making work more pleasant and leading to better results.

Thanks to the unrivalled small turning radius of 1.7 m in combination with a loading conveyor angle of 130°, even tight roundabouts can be completed quickly and neatly.



The rear area is also uncluttered and clearly laid out, and the camera system covers the last blind spot here. For more safety on the job.

**THE LIGHTEST MACHINE IN THE 650 HP CLASS.**

This makes the BM/65 series the new benchmark in the competitive environment. And fewer kilos are a weighty advantage when it comes to efficient and flexible transport processes.

The new lightweight construction of the frame and milling box forms the basis for the weight optimisation. Even though the milling box is now lighter, it retains all its proven wear-protection parts.

With a CECE weight of 27 t, the BM/65 is the top performer in its class, which facilitates the transport approval process. A clear cost benefit for the owner. In addition, there is a plus in flexibility: if an application requires greater weight, the machine can be adapted ex works with optional ballasting (up to 1.8 t).

**EVEN MORE TRANSPORT FRIENDLY.**

Because the conveyor belt is approx. 600 mm shorter when folded, the BM/65 takes up less space on the trailer and frees up more space between the conveyor belt and the tractor.

	<b>BM 1500/65</b>	<b>BM 2000/65</b>	<b>BM 2200/65</b>
Operating weight CECE [kg]	27,000	27,000	27,600



Saves space and weight, sets standards in the two-metre class: the new generation of the BM/65 series.

THE EASE OF USE:

## WORKS HARD WITHOUT CAUSING MUCH WORK.

Just how well-thought-out the BM/65 series is also becomes evident beyond the actual work assignment. i.e. when it comes to service and maintenance. This calls for quick action and direct access. And that's why the water system, hydraulic valve block and oil filter are so easy to reach.



The high-pressure cleaner, conveyor hydraulics, milling drive and engine are readily accessible via four easy-to-reach maintenance flaps.

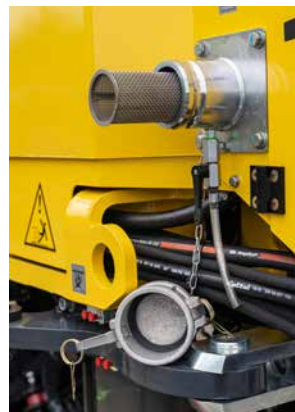
### **DIRECTLY.**

You can reach the engine and hydraulic filters directly via the access on the driver's stand. The filler necks for diesel and AdBlue are located right next to the storage compartment. It is not necessary to fill from the side or via the engine compartment.



### **WITHOUT LOSS OF QUALITY.**

Water quality on construction sites significantly impacts a machine's overall performance. Contaminated water can clog the spray nozzles, which directly affects the cooling and rotation of the cutters. BOMAG dual filtration pre-filters large particles, while smaller particles are collected by a fine filter upstream of the water system. This is easily accessible and quick to clean.



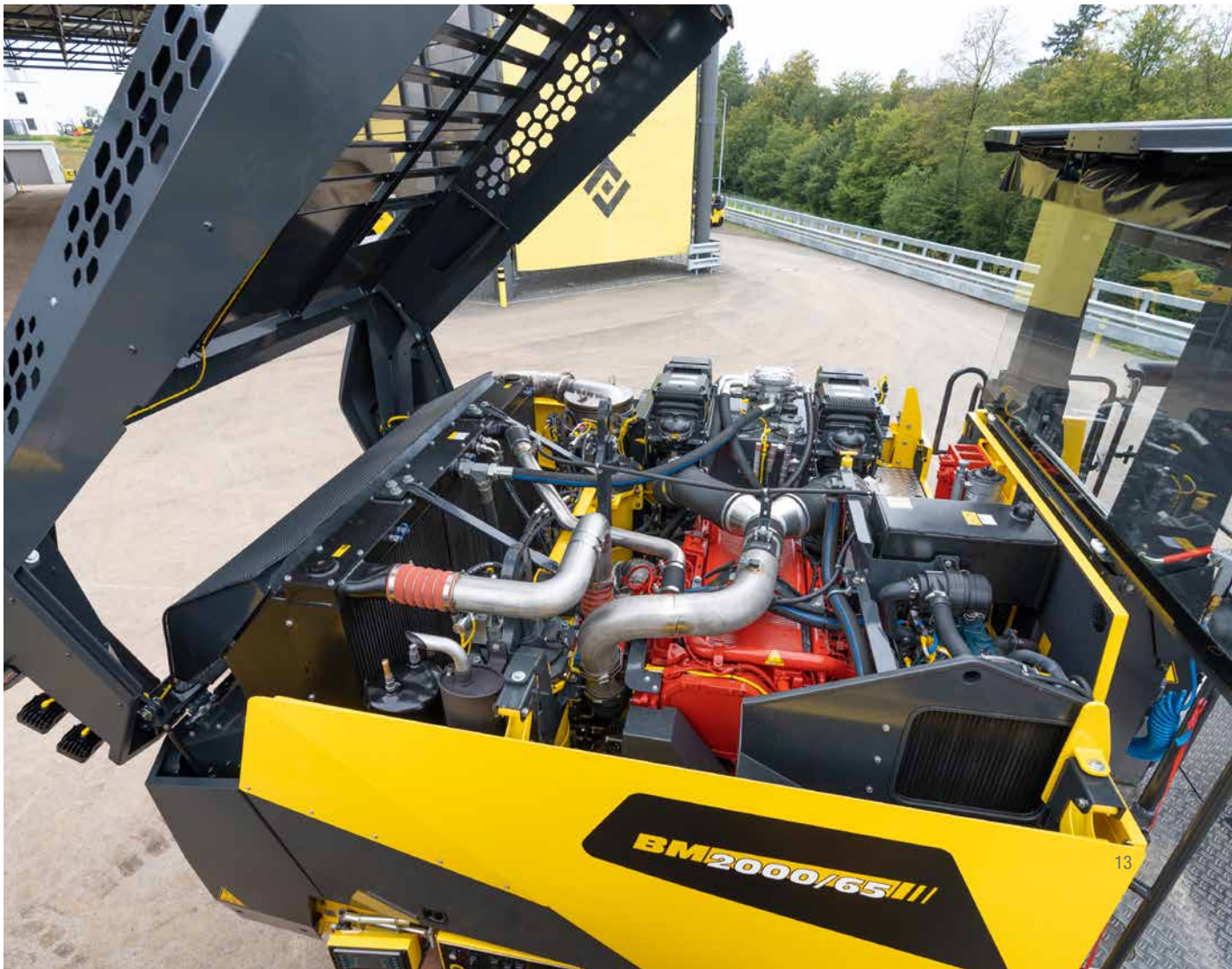
### **EVERYTHING IN THE RIGHT PLACE.**

The lockable storage compartment with variable inner shelf offers ample space for any challenge: for example, it also features an electrically operated cool box that can be powered via the 12/24V connection.



### **CUTTERS TO GO.**

The rear storage compartment provides a well-organised structure for onboard tools and 12 cutting tool boxes that come as standard. With the optionally available storage compartment extension, the number of cutting tool boxes on board can be increased to up to 69.



## THE CONVEYOR BELT TECHNOLOGY:

# CLEANER, SAFER AND EASIER TO SWIVEL – NON-STOP EFFICIENCY.

*Drives and milling technology play a major role in a planer's efficiency and productivity. On closer inspection, however, the transport of the milled material on the conveyor belt also plays a decisive role.*

The completely redesigned conveyor belt generation with a 130° slewing angle shows its practical superiority when things start getting tight: When milling on small roundabouts, this makes loading the truck a simple process.

Basically, the conveyor belt must perform two tasks: Firstly, it has to enable optimum material transport without losses, and, secondly, it must be designed so that cleaning and servicing take as little time as possible. Better sealing not only ensures greater reliability but also a dust-free working environment.



The 130° slewing angle of the conveyor belt ensures maximum manoeuvrability and flexibility when loading the truck.



The efficient cleaning system increases the machine's operational readiness.



Optimum sealing of the inner conveyor belt increases reliability and reduces dust pollution.



Additional cleaning openings on both sides allow dust deposits inside the machine to be flushed out. They flow towards the inner conveyor belt, where they can be transported away with other dirt.



Cleaning a planer is the key to flawless operation. This also includes dust extraction. Depending on the construction site, dust deposits may occur that permanently change the cross-section of the suction hose. The BM/65 series has a solution to this problem: an efficient and convenient cleaning system. Membranes on the suction hose allow it to be cleaned from the fan to the machine using a pipe-cleaning nozzle.

THE LIGHTING EQUIPMENT:

## **BRIGHTER THROUGH THE NIGHT.**

*Nowadays, it is no longer a rare sight to see planers in operation on night-time construction sites. The BM/65 series is ideally equipped for this ex works. With a brightness of 37,700 lumens, it has the strongest standard illumination in its class, which once again underlines its performance.*





**ABUNDANT LIGHT, NO SHADOWS.**

All work lights are arranged to prevent shadows in critical areas. This allows the machine operator to carry out work easily and safely, even at night. Another plus point on the efficiency scale.



With the additional lighting of the Advanced Night Package on the discharge belt, the trough is perfectly illuminated.

**TURNING NIGHT INTO DAY.**

The optional Advanced Night Package is designed for those who regularly conduct night-time operations. It contains 19 more powerful work lights that turn night into day with an additional 142,750 lumens of light – and the workload like a routine day for your operators.



Full beam ahead: the BM/65 with Advanced Night Package on a motorway construction site.



Particularly easy to see in daylight: the well-thought-out positioning of the entire spotlight array.

## THE CUTTING TECHNOLOGY:

# A CUT ABOVE THE REST.

The key to higher efficiency lies in functionally well-thought-out solutions. The quick-change system based on central bolting with dust and dirt-protected gears is easy to use and enables the milling drum to be replaced in next to no time. It is available as an option and quickly pays for itself.



Exchangeable carbide wear protection of the milling box and milling drum.

High working depths even with large height differences: with a side plate lift of up to 500 mm on the right, our machines set new standards for milling close to kerb edges and removing surfaces at full depth.



## QUALITY SAVES MONEY.

In this case, effective work means: converting engine power optimally into milling power. Our compact planers excel in this discipline. This is due to the quality in every detail. For example: The BMS 15 L BOMAG tool holder system, optimised for efficiency, is known for its long service life, which increases the machine's availability and extends service intervals. But it also stands out for its easy handling and low repair costs. A complete change of tool holders takes only half the time compared to other systems on the market. This combines maximum performance with lower operating costs.



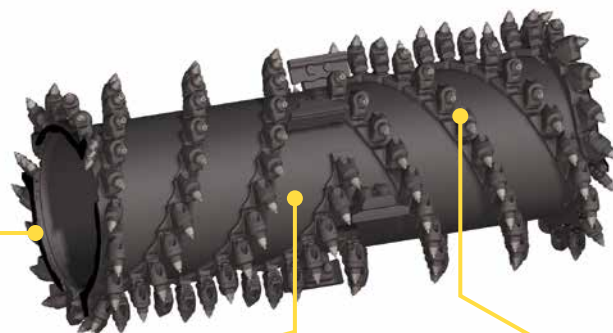


### OPTIMAL THROUGH EXPERIENCE.

The arrangement of the holder systems on the milling drum is optimised to provide the unrivalled milling quality and high efficiency of BOMAG planers. The proven and constantly refined design guarantees the ideal rotational performance of the cutting tools with the least possible wear and tear. The helical arrangement of the cutting tools on the drum transports the milled material to the ejector plates with precision and then on to the ejection area on the milling box.

### CUTTING EDGE DESIGN.

A cleanly cut edge is essential when repaving asphalt. Whether travelling straight ahead or cornering, the edge cutters ensure a cleanly cut edge and protect the milling drum from excessive wear.



### ROBUST.

The edge areas on the outer ring of the milling drum, which are subject to particularly heavy wear, are additionally protected by extremely hardened wear elements.

### ECONOMICAL.

Thanks to the tool holder's slim design, BOMAG milling drums are significantly more efficient, allowing more power to be converted into force on the cutting tools. This can reduce fuel consumption and wear by up to 20%.

### VERSATILE.

Available tool spacings from 6 to 25 mm and milling drum widths from 1,500 mm to 2,200 mm enable versatile use.

## THE PROTECTIVE SHIELD:

# INTELLIGENT REDUCTION OF FINE DUST.

*Particle pollution, better known as fine dust, is becoming an increasingly important issue for cities and the environment. Elevated fine dust levels are being measured repeatedly, especially in urban areas. If these exceed a certain limit, warnings or even driving bans are issued to prevent adverse health effects.*

Fine dust is the term used to describe the minute particles in the air that can penetrate the respiratory tract. In road construction work, and especially during planing, fine dust is generated that affects the site personnel as well as the machine operators. That's why sustainable solutions are particularly in demand here. BOMAG's optional ION DUST SHIELD is a particularly smart solution to this challenge.

This special protective shield is intended as an addition to the standard dust extraction system and reduces the amount of hazardous fine dust by at least 88%\*. As a result, BOMAG's ION DUST SHIELD achieves the highest level of protection available for the driver and the environment.



### NO FILTER, BUT AN AWARD!

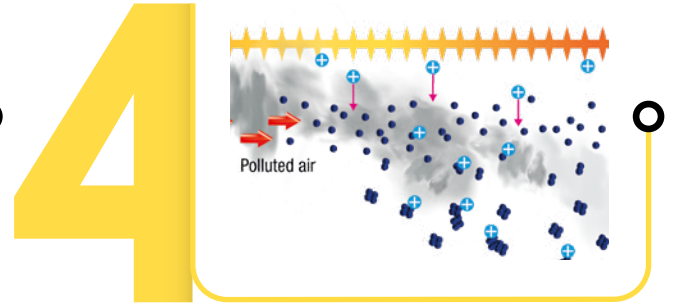
The idea: by applying an electrical charge, fine and micro-fine particles bind together to form coarse dust, which can be ejected together with the milled material via the conveyor belt. This makes it possible to dispense with filters entirely, which also has cost benefits.

After all, filters have to be cleaned and maintained, and may even require disposal as hazardous material. BOMAG ION DUST SHIELD is the most effective dust reduction system on the market. It received an award for innovation at the 2019 bauma.

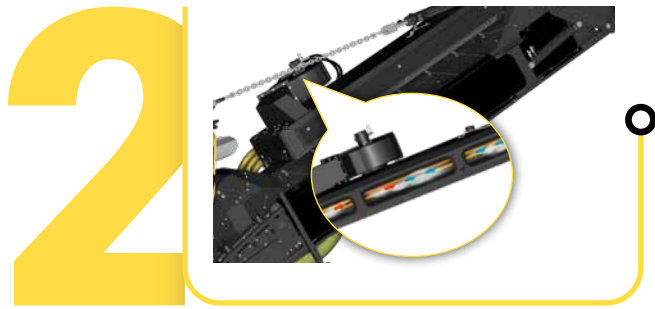
\* Reference measure BM1000/35



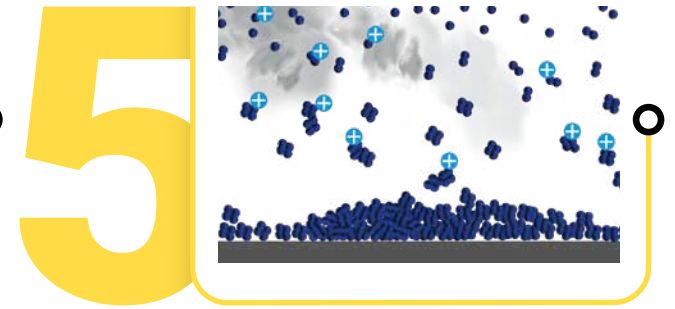
First of all, the dust is extracted where it is generated (at the transition between the milling box and conveyor belt).



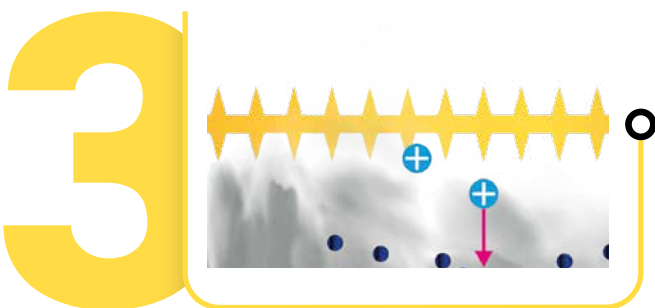
The positively charged fine dust becomes unstable and tries to regain stability by forming a bond with other fine dust particles. More and more fine dust particles combine permanently to form harmless coarse dust.



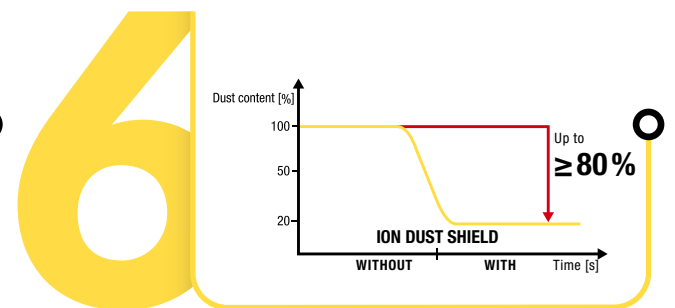
Before being blown onto the conveyor belt, the dust passes through the ION DUST SHIELD box.



These particles sink onto the negatively charged housing and are removed via the conveyor belt as non-hazardous coarse dust.



In the box, the extracted fine dust hits electrodes that ionise (charge) it positively.



The result has been scientifically confirmed by measurements conducted by the Institute for Hazardous Materials Research (IGF) of the Ruhr University Bochum and the Institut National de Recherche et de Sécurité (IRNS). Result: at least 80% of the fine dust is removed.

## EASY SERVICE:

# MAINTENANCE WITHOUT WAITING.

### ALWAYS READY FOR ACTION.

Durability and ease of maintenance are part of the BOMAG philosophy. Implemented down to the smallest detail, they reduce service requirements and machine downtimes to a minimum.

### EVERYTHING IN THE RIGHT PLACE.

With BOMAG, service-relevant components are always positioned for ease of operation and freely accessible. This applies to fuel and lubricant tanks, the service points in the engine compartment and for every operation.



All relevant filters are easy to reach via the engine compartment.



All fluid tanks are equipped with a level indicator that immediately catches the eye.



The transmission, hydraulics and engine are within easy reach through wide-opening maintenance flaps on the side.



The batteries and compressed air system can also be easily accessed from the side.



Easy and safe access for refilling AdBlue on the driver's platform.



Easy maintenance of the conveyor belt: the drive can be removed for maintenance without major dismantling.



Operating and maintaining the high-pressure cleaner is carried out easily and safely from the ground.



The dust extraction system inside the machine is easily accessible for cleaning, ensuring proper operation.



Ingeniously simple, BOMAG's ION DUST SHIELD provides effective fine dust reduction without a filter.



### **EFFICIENCY X AVAILABILITY = PRODUCTIVITY.**

When investing in a construction machine, it is essential to consider the life cycle costs. What makes a construction machine economically valuable over the long term is its productivity combined with low operating and maintenance costs. This forms the basis of every design decision at BOMAG.

### **HIGH PERFORMANCE.**

With their 640 HP engines, BOMAG planers are the most powerful machines in their class. The torque is transferred optimally to the milling drum by means of variably configurable planing and feed speeds. And all this with low fuel consumption.

### **HIGH EFFICIENCY.**

High engine power only pays off if it is effectively converted into milling power. With BOMAG, this is ensured above all by the drum geometry, optimised in years of basic research, and the low mechanical resistance of the innovative holder systems.

### **EFFICIENT ERGONOMICS.**

When it comes to efficiency and quality, the operator has always been number 1. Providing the best possible support is a guiding principle at BOMAG. An excellent overview, easy access to all control elements, reliable, intuitive operator guidance and a high level of comfort are just some of the aspects that contribute to a maximum daily output.

### **INTELLIGENT SERVICE CONCEPTS.**

BOMAG planers are designed down to the smallest detail with ease of maintenance in mind. As a result, all routine service activities, such as cutting tool replacement, require significantly less time. This keeps expensive downtimes on the job site to a minimum.

### **MINIMAL WEAR.**

A design concept geared towards robustness (with e.g. external cooling and filtration of the gear oil) and the use of high-quality materials maximise the lifetime of the planers and all their components. This not only increases the machine's valuable service life but also increases its availability by reducing service intervals.

Highest efficiency combined with maximum availability: that's the BOMAG key to sustainable productivity.

## OPTIONAL EQUIPMENT:

# ALL THE EXTRAS.

### **WEATHER PROTECTION ROOF.**

The large weather protection roof offers optimal shelter and can be folded back for transport. If required, the front windscreen can also be extended in addition to the roof. This allows for even better protection from the sun, rain or wind.



### **HIGH-PRESSURE CLEANER.**

The hydraulic high-pressure cleaner makes daily cleaning easier and extends the service life of the planer. The machine is supplied with a high-pressure cleaner, a high-pressure hose and a spray gun.



### **DUST EXTRACTION.**

The dust extraction system prevents particulate matter from entering the operator's working area by creating a vacuum in the milling box. The system meets the requirements of the German BG Bau and the Dutch TNO.



### **BALLASTING.**

Due to the CECE weight of 27 t, the machine can be transported in certain regions without a special permit. On request, the machine can also be loaded with up to 1,800 kg ex works.







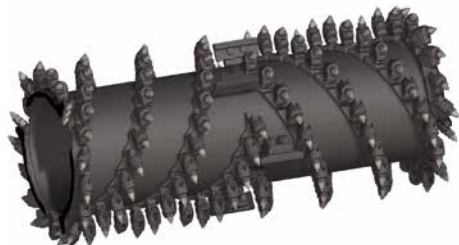
### **LEVELLING FROM THE GROUND CONTROL CONSOLE.**

The additional display extends the easy-to-operate automatic levelling system BOMAG Easy Level for the ground control console. This allows the person on the ground to assist the driver with levelling. All necessary information is also displayed here. Thanks to the flat menu structure, relevant adjustments can also be made from the ground during milling in a maximum of 3 steps.



### **AUXILIARY DRIVE FOR TOOL CHANGE.**

With the auxiliary drive for cutting tool changes, the milling drum can be moved effortlessly and safely for maintenance purposes. This considerably speeds up and simplifies cutting tool replacement. The planer is moved into the service position at the push of a button, thus ensuring safe and optimum access.



### **MILLING DRUMS.**

Working widths from 1,500 to 2,200 mm and tool spacings from 6 to 25 mm for surface and fine milling jobs all the way to full removal: with its wide range of high-quality milling drums, BOMAG offers the right tool for every application.



### **AUXILIARY DRIVE.**

Enables all hydraulic functions to be used fuel-efficiently when the main diesel engine is switched off. This is not only beneficial when changing cutting tools, but also for other work on the machine, such as cleaning the conveyor belt. Emergency drive mode is also included. Even if the main drive fails, the machine can be driven out of hazardous areas and construction sites with no difficulty. This significantly increases reliability, e.g. in tunnel or airport projects. And reduces the risk of high costs for fines or removal by crane.

# TEAMWORK IN ACTION.

In the end, it's always the result that counts. And that's why your experience counts for us right from the start. When we start designing a machine, your wishes and requirements are directly incorporated into the technical development. Your requirements are always part of our solution. This

is precisely why our machines are used successfully all over the world and are up to every challenge. Success is all about teamwork – like here, for example: on State Route 321, outside Blowing Rock in the Blue Ridge Mountains in West North Carolina, USA.





Head Office / Hauptsitz:

**BOMAG**  
Hellerwald  
56154 Boppard  
GERMANY  
Tel. +49 6742 100-0  
info@bomag.com

**BOMAG Maschinen-  
handels-gesellschaft m.b.H.**

Klausenweg 654  
2534 Alland  
AUSTRIA  
Tel. +43 2258 20202  
austria@bomag.com

**BOMAG MARINI EQUIPAMENTOS LTDA.**

Rua Comendador Clemente Cifali, 530  
Distrito Industrial Ritter  
Cachoeirinha – RS  
BRAZIL  
ZIP code 94935-225  
Tel. +55 51 2125-6677  
brasil@bomag.com

**BOMAG (CANADA), INC.**

2233 Argentia Road, East Tower  
Suites 302  
Mississauga, ON, Canada  
L5N 2X7  
Tel. +1 800 782 6624  
canada@bomag.com

**BOMAG (CHINA)**

Compaction Machinery Co. Ltd.  
No. 2808 West Huancheng Road  
Shanghai Comprehensive  
Industrial Zone (Fengxian)  
Shanghai 201401  
CHINA  
Tel. +86 21 33655566  
china@bomag.com

**BOMA Equipment**

**Hong Kong LTD**

Room 1003, 10/F Cham Centre  
700, Castle Peak Road  
Kowloon  
HONG KONG  
Tel. +852 2721 6363  
bomahk@bomag.com

**BOMAG France S.A.S.**

2, avenue du Général de Gaulle  
91170 Viry-Châtillon  
FRANCE  
Tel. +33 1 69578600  
france@bomag.com

**BOMAG (GREAT BRITAIN), LTD.**

Sheldon Way  
Larkfield, Aylesford  
Kent ME20 6SE  
GREAT BRITAIN  
Tel. +44 1622 716611  
gb@bomag.com

**BOMAG Italia**

Via Roma 50  
48011 Alfonsine  
ITALY  
Tel. +39 0544 864235  
italy@bomag.com

**FAYAT BOMAG Polska Sp. z o.o.**

Ul. Szyszkowa 52  
02-285 Warszawa  
POLAND  
Tel. +48 22 482 04 00  
poland@bomag.com

**FAYAT BOMAG RUS OOO**

141400, RF, Moscow region  
Khimki, Klayazma block, h. 1-g  
RUSSIA  
Tel. +7 (495) 287 92 90  
russia@bomag.com

**BOMAG GmbH**

300 Beach Road  
The Concourse, #18-06  
Singapore 199555  
SINGAPORE  
Tel. +65 6 294 1277  
singapore@bomag.com

**BOMAG Americas, Inc.**

125 Blue Granite Parkway  
Ridgeway SC 29130  
U.S.A.  
Tel. +1 803 3370700  
usa@bomag.com

